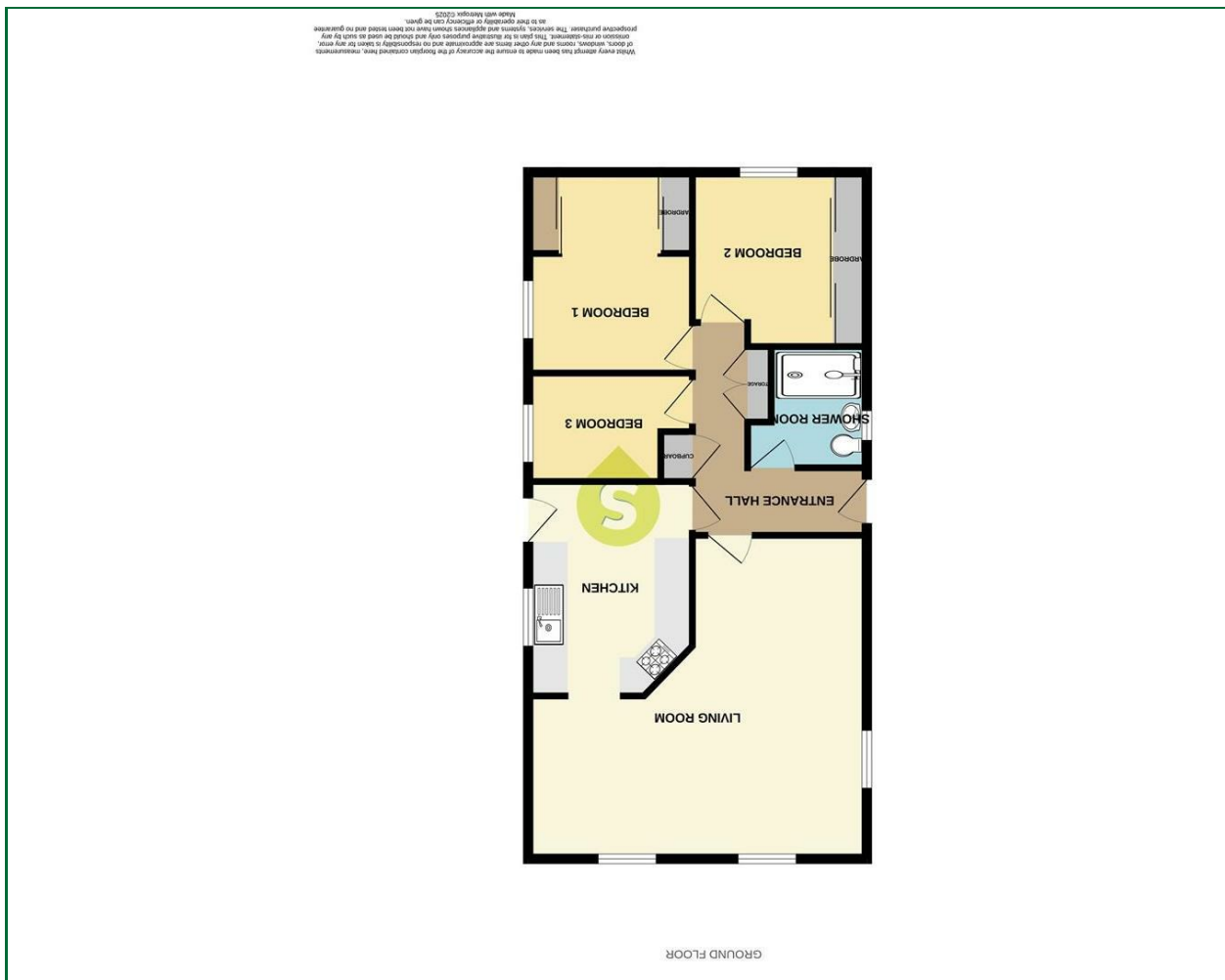




These particulars, whilst believed to be accurate are set out as a general outline only for guidance and do not constitute any part of an offer or contract. Intending purchasers should not rely on them as statements of representation of fact, but must satisfy themselves by inspection or otherwise as to their accuracy. No person in this firm's employment has the authority to make or give any representation or warranty in respect of the property.

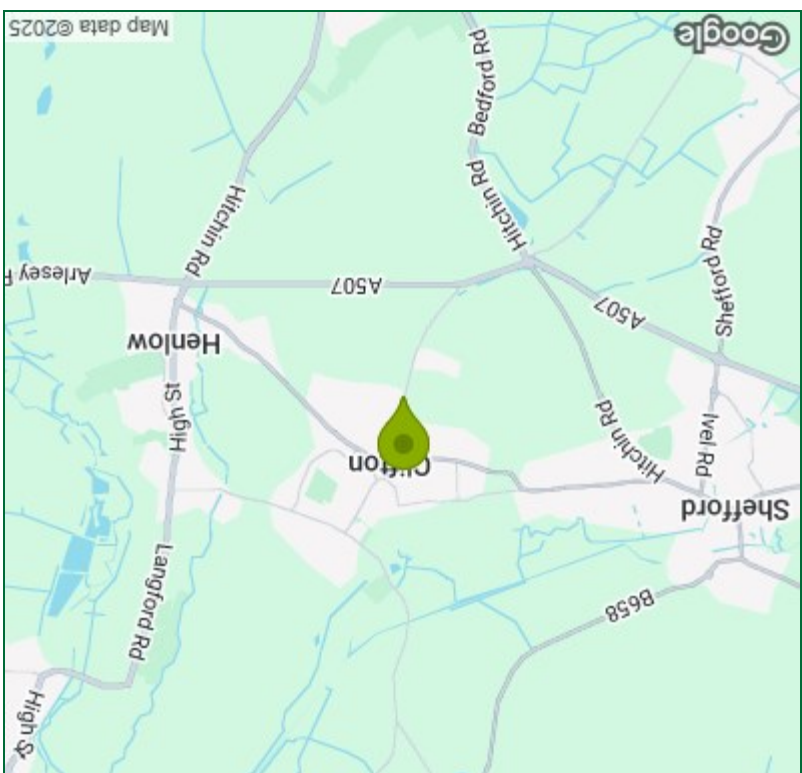
Please contact our Sheffield Office on 01462 814087

Viewing



Floor Plan

Energy Efficiency Graph



Area Map



New Road,
Clifton | Beds
£220,000



Entrance Hall

Entrance door, radiator, two storage cupboards.

Living Room

19'5" x 18'7"

Dual aspect room with two windows to front and window to side, two radiators, electric fire.

Kitchen

12'3" x 9'3"

Well fitted kitchen with a range of base and eye level units with roll top work surfaces, one and a half stainless steel sink unit with mixer tap, integrated eye level oven, gas hob with extractor hood ov, tiled splash back, cupboard housing wall mounted has boiler, window to rear, door to rear.

Shower Room

Refitted suite comprising of large, walk in double shower cubicle, low level w.c, wash hand basin in vanity unit window to side.

Bedroom One

11'6" x 9'6"

Window to side, radiator, two fitted double wardrobes with sliding doors.

Bedroom Two

9'6" x 9'6"

Window to rear, radiator, fitted wardrobe with sliding doors.

Bedroom Three

9'3" x 5'11"

Window to side, radiator.



Front Garden

Block paved driveway providing off road parking, path leading to front door, gravelled area with shrubs.

Garage

Up and over door, power and light.

Rear Garden

Large garden laid mainly to lawn, paved patio area.

Agents Notes

Clifton Park Homes operates and over 25s policy and is a "No Pet" park.

Pitch - £42.20

Garage - £10.27

Water - £6.76

Total: £59.23

